

# MEASURING CUPS

# CUPS





## CUSTOMIZATION

- Standard transparent color
- Various colors on request

## BENEFITS

- Compliance with international regulations, including but not limited to FDA and CE marking
- For caps PP25 to PP38



	FOR PP25 PLASTIC	CAPACITY	GRADUATION (ML)	DIM. H X D
	32701	14 ml	5 - 10	31.1 x 31 mm
	STI036	20 ml	2.5 - 5 - 7.5 - 10 - 12.5 - 15 - 17.5	33.3 x 29.8 mm

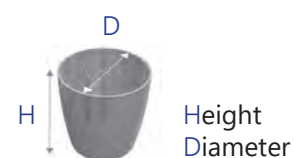
	FOR PP25 ALUMINIUM	CAPACITY	GRADUATION (ML)	DIM. H X D
	STI044 PP25	23 ml	2.5 - 5 - 7.5 - 10 - 12.5 - 15 - 17.5 - 20	29 x 37.5 mm

	FOR PP31 PLASTIC	CAPACITY	GRADUATION (ML)	DIM. H X D
	32850	25 ml	2.5 - 5 - 7.5 - 10 - 12.5 - 15 - 17.5 - 20	27.8 x 38 mm

	FOR PP38 PLASTIC	CAPACITY	GRADUATION (ML)	DIM. H X D
	32800PP38	60 ml	10 - 15 - 20 - 25 - 30 - 35 - 40 - 45 - 50 - 55	47.2 x 48 mm

# MEASURING CUPS

## CUPS



	FOR PP28	CAPACITY	GRADUATION (ML)	DIM. H X D
	32701 PP28 aluminium	14 ml	5 – 10	31 x 31.1 mm
	32840 PP28 aluminium	20 ml	2.5 – 5 – 7.5 – 10 – 12.5 – 15 – 17.5	30 x 33.3 mm
	32820 PP28 plastic PP28 TE	20 ml	2.5 – 5 – 7.5 – 10 – 12.5 – 15 – 17.5	25.3 x 36 mm
	32830 PP28 plastic PP28 TE	25 ml	2.5 – 5 – 7.5 – 10 – 12.5 – 15 – 17.5 – 20	31.2 x 36 mm
	STI029 PP28 plastic PP28 TE	23 ml	2.5 – 5 – 10 or 2.5 – 5 – 15 or 2.5 – 5 – 7.5 – 10 – 12.5 – 15 – 17.5 – 20	29 x 37.5 mm
	32811 PP28 aluminium	30 ml	2.5 – 5 – 7.5 – 10 – 12.5 – 15 – 17.5 – 20 – 22.5 – 25	25.3 x 48.1 mm
	32812 PP28 CRC-TE	30 ml	5 – 7.5 – 10 – 15 – 20 – 25	25.3 x 48.1 mm
	32810 PP28 plastic PP28 TE	30 ml	2.5 – 5 – 7.5 – 10 – 12.5 – 15 – 17.5 – 20 – 22.5 – 25	25.3 x 48.1 mm
	26105031 PP28 plastic 26105041 PP28 aluminium	30 ml	5 – 10 – 15 – 20	34.5 x 38.6 mm
	32702 PP28 CRC-TE	35 ml	5 – 7.5 – 10 – 12.5 – 15 – 17.5 – 20 – 22.5 – 25 – 27.5 – 30	35.9 x 44.5 mm
	STI042 PP28 plastic PP28 TE	55 ml	5 – 10 – 15 – 20 – 25 – 30 – 35 – 40 – 45 – 50	42.5 x 48.2 mm
	32800 PP28 plas. PP28 TE	60 ml	10 – 15 – 20 – 25 – 30 – 35 – 40 – 45 – 50 – 55	46.9 x 46.6 mm

# MEASURING CUPS

## IML HIGH-END CUSTOMIZATION



Our technical process with **IML (In-Mold Labelling)** creates fully customized dosing devices that comply with the European Pharmacopoeia (CE marking). **IML technology** embeds the label into the package, unlike pad printing or offset or adhesive labels, which are surface printed, thus offering an indelible result.

- 💧 **Dosing:** high contrast for ease of reading
- 💧 **Full, long-lasting customization:** indelible marking, exceptional print quality with four-colour, multiple options (metallic effect, hologram to prevent counterfeiting, etc.) and patterns available (fun visual, technical information, logo, etc.)
- 💧 **Effective communication tool:** strengthens the product or brand identity
- 💧 100% recyclable, single-material (PP) cup
- 💧 **Short lead times:** simplified production with a one-step process (injection and decoration)



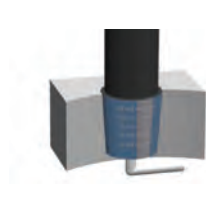
1

Printing of customized labels



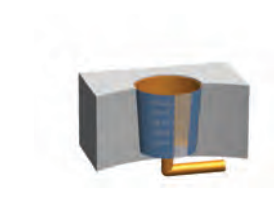
2

Positioning of the label around the mandrel



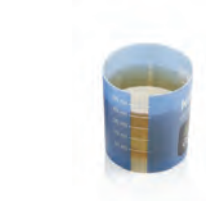
3

Insertion of the label into the mold



4

Injection of plastic material.  
Fusion of label and plastic



5

Finished, single-material product with indelible marking

	REFERENCE	CAPACITY	FOR PP28**	DECORATION / GRADUATION	DIM. H X D
	STI035	23 ml	Plastic TE	Fully customized	29 x 37.5 mm
	STI032	60 ml	Plastic TE	Fully customized	48.5 x 45.5 mm

\*\* Compatible with other necks or cap models on request